



FEBRUARY 17, 2025

RAJEEV KHOODEERAM

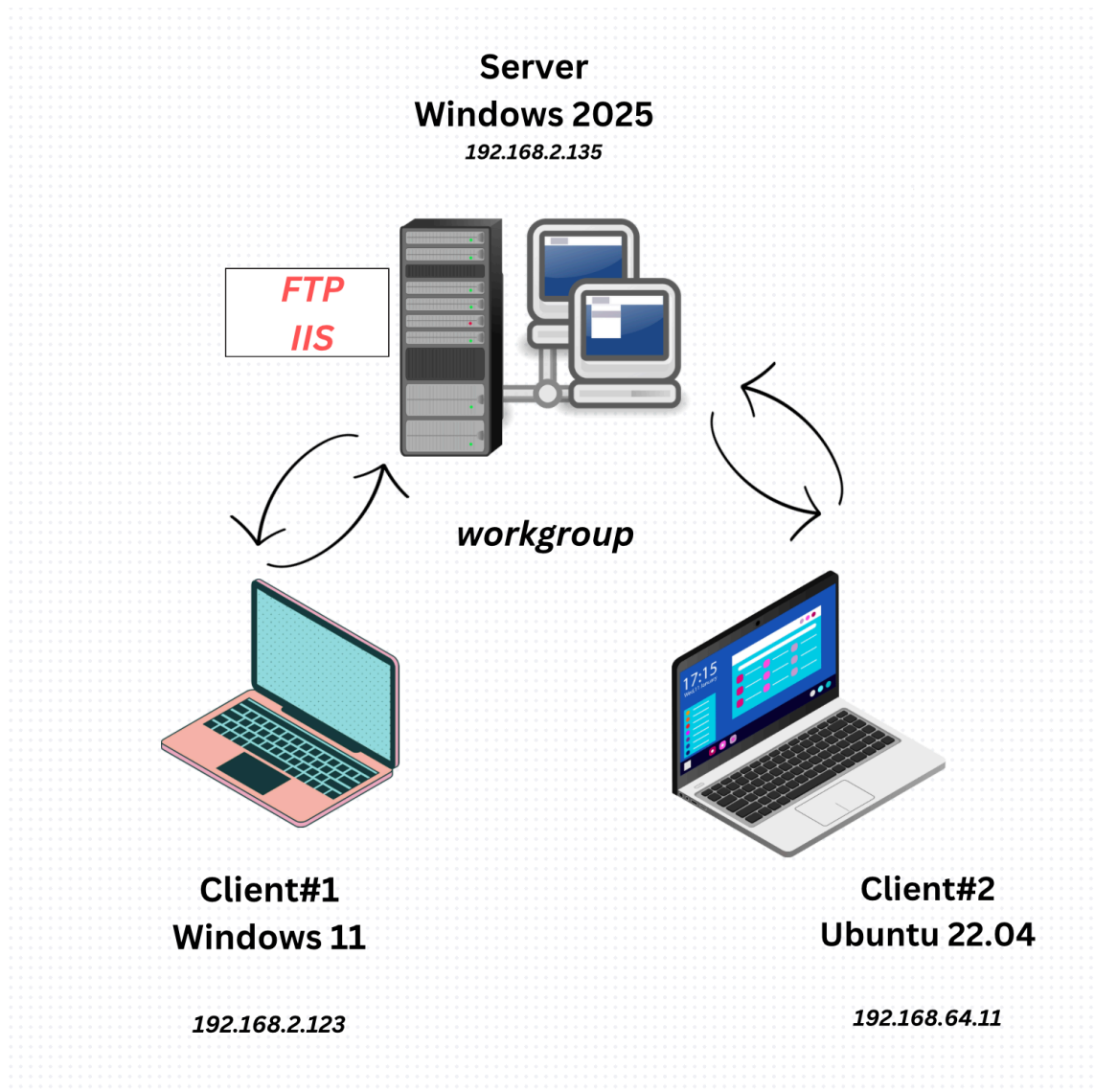
ASSIGNMENT
PC SUPPORT

SUBMITTED TO RAYMOND LEIGHTON

QUESTION #2

Install a SERVER - win 2012 or higher and leave in workgroup :

1. Add role of IIS and FTP
2. Install FTP server with anonymous access or basic
3. Show your work of the setup of server and FTP
4. Show that you can access the FTP from either a host or another pc - vm.
5. See if you can get a file from the server!



SETUP

My set up consists of Windows 2025 server and two clients namely Windows 11 and Ubuntu 22.04. With the exception of Windows 11 which is on VMFusion, the two others are on UTM. All these virtualization are on my MacBook Pro Apple M3. **Earlier versions of Windows could not be installed due to ARM architecture requirement of the MAC host.**

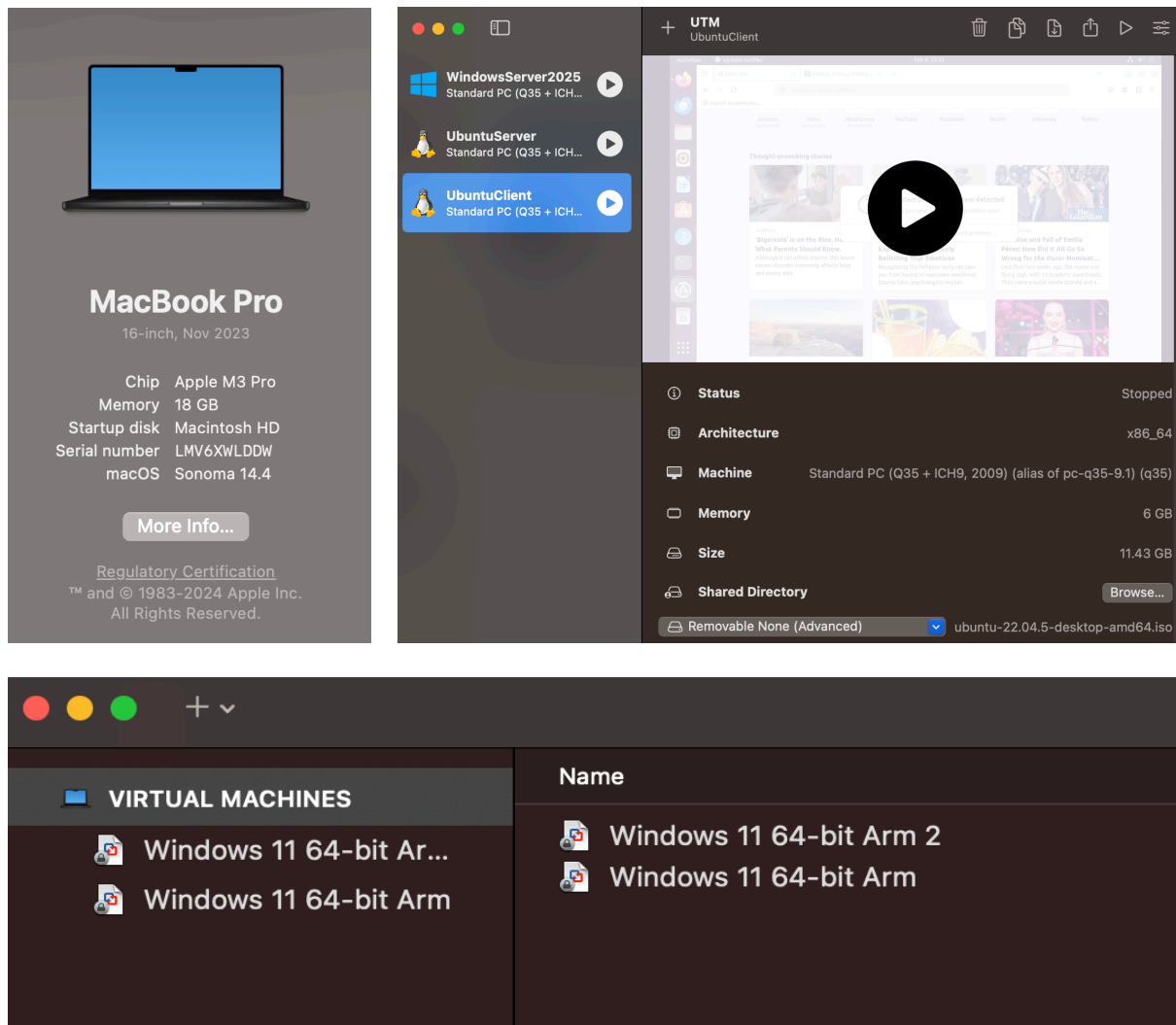
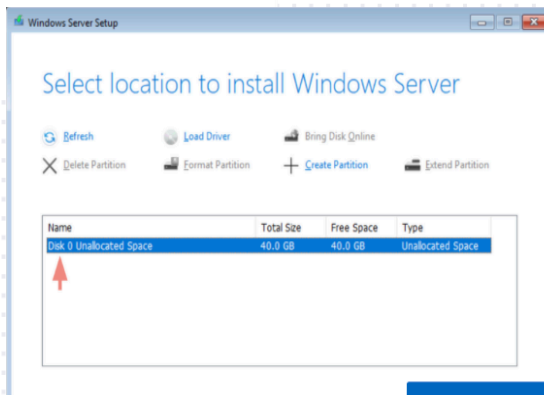
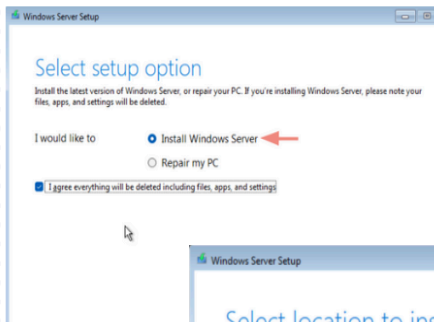
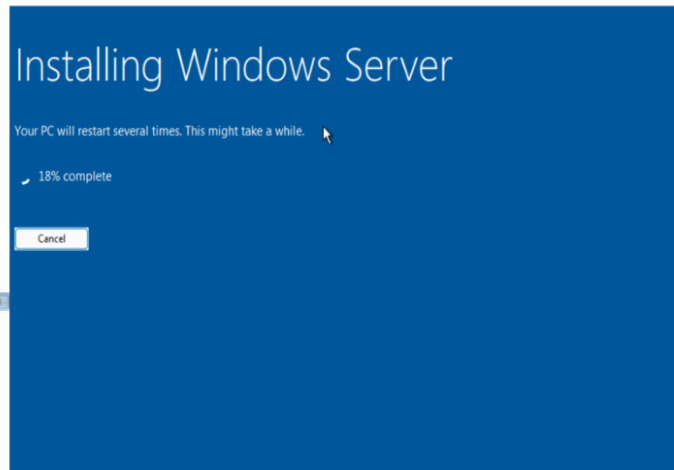


TABLE OF CONTENTS

TABLE OF CONTENTS	3
SETTING THE SERVER	4
TESTING THE WINDOWS 11 CLIENT	6
TESTING THE ubuntu CLIENT	7
ADDING ROLES : IIS AND FTP	8
CONFIGURING IIS on the server	9
TESTING IIS on (1) windows server (2) windows 11 client (3) uBUNTU CLIENT	10
FTP installation and configuration	11
FTP testing on windows client (LISTING/GETTING FILES)	12
FTP testing on windows client (SENDING FILES)	13
FTP testing on ubuntu client	14

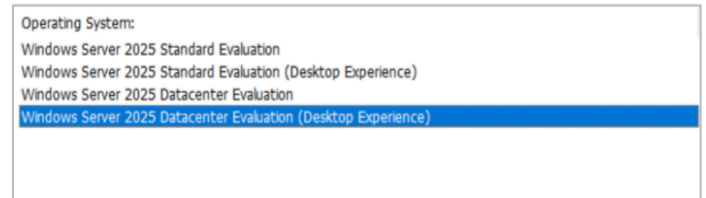
SETTING THE SERVER

Windows Server 2025 (ARM version) was installed on UTM Virtualization software. The following screenshots show some of the installation steps of this server.



Select Image

Please select the image you want to install.



This option installs the full Windows graphical environment, consuming extra drive space. It can be useful if you want to use the Windows desktop or have an app that requires it.

Customize settings

Type a password for the built-in administrator account that you can use to sign in to this computer.

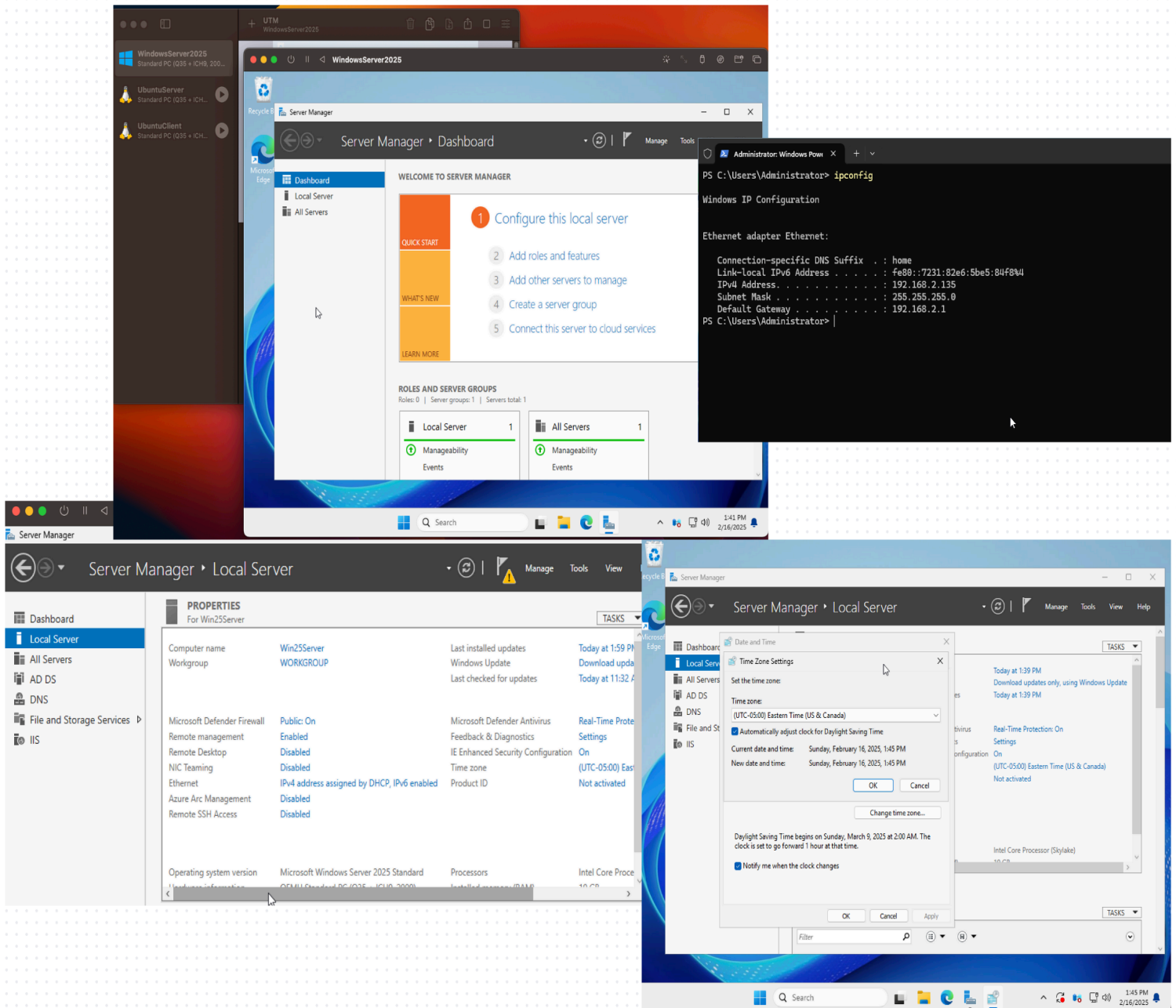
User name:

Password:

Reenter password:

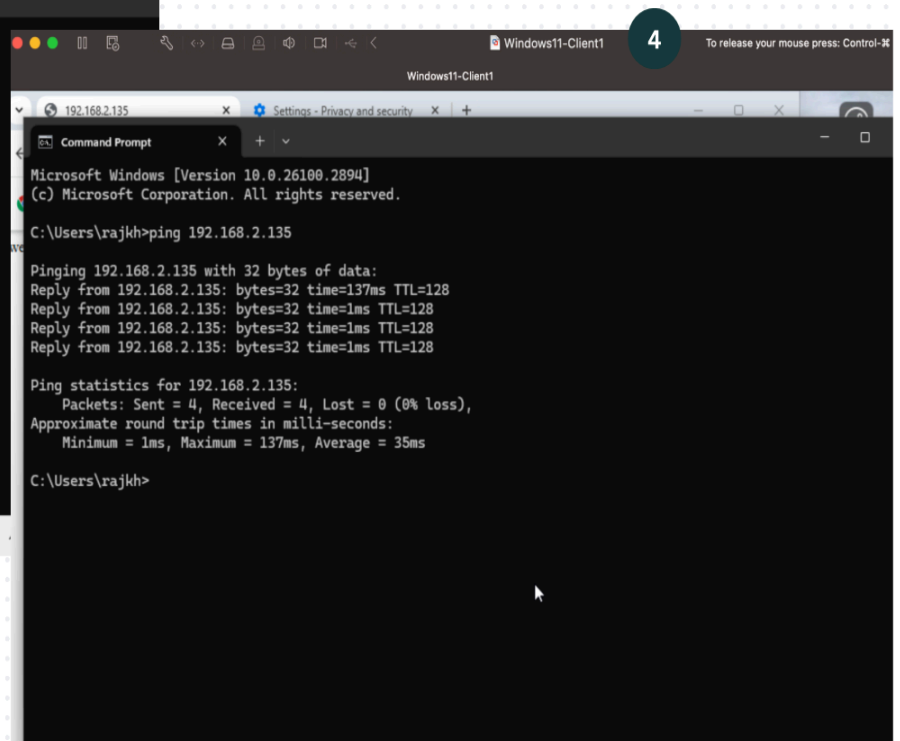
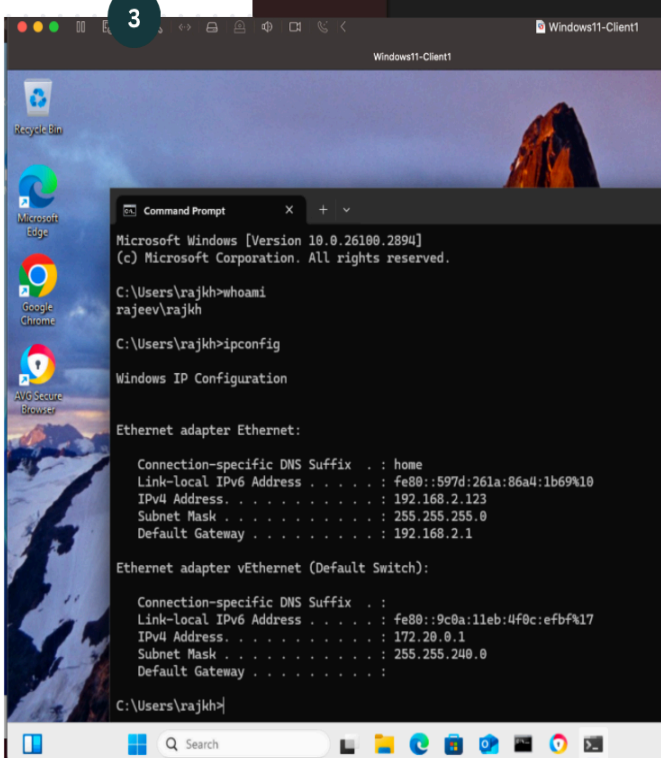
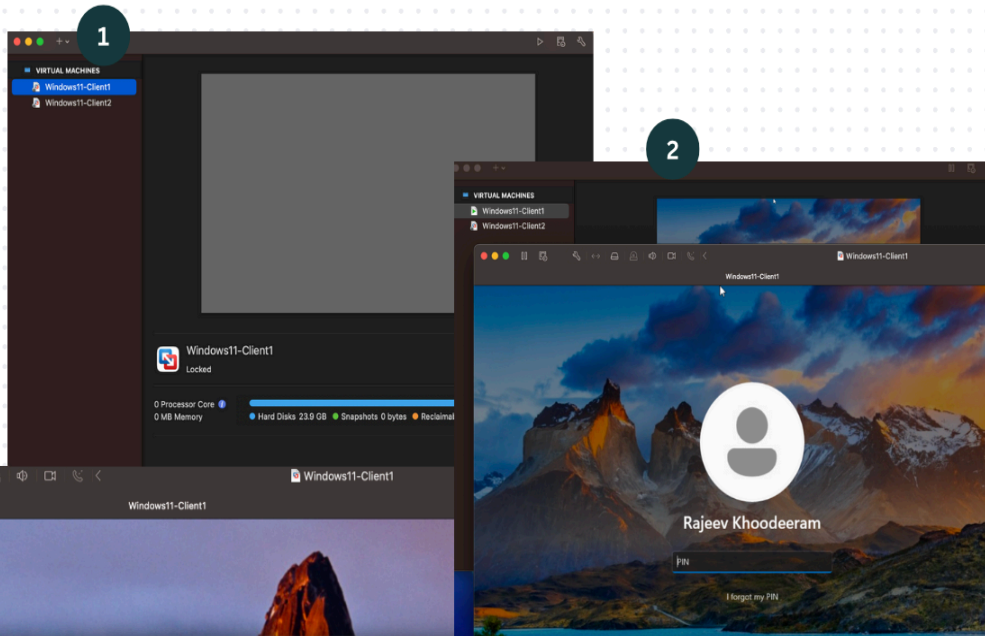
ASSIGNMENT - PC SUPPORT

Some configurations were required to get the server running on UTM. Note the server IP address : **192.168.2.135**



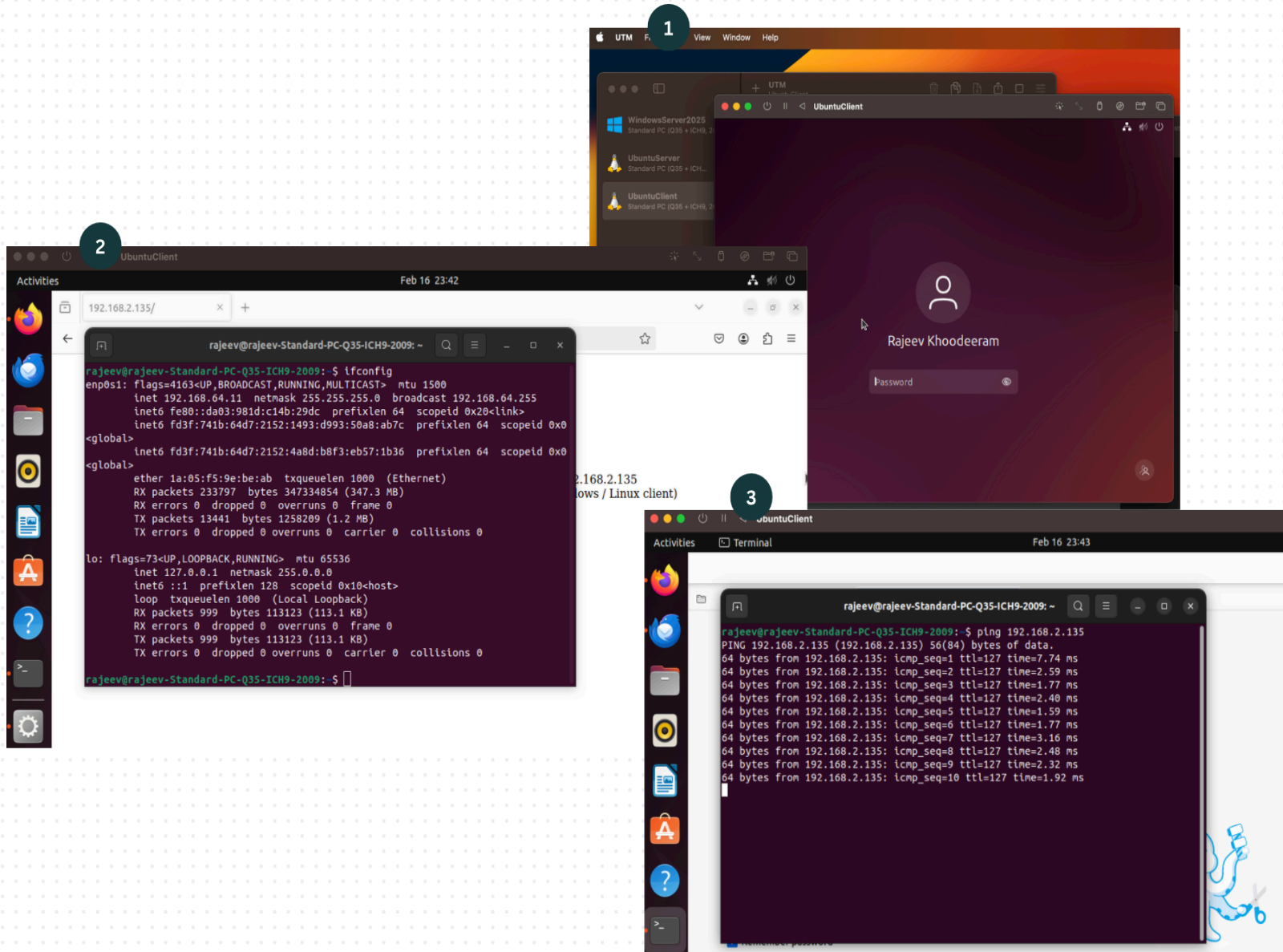
TESTING THE WINDOWS 11 CLIENT

The Windows Client (Windows 11) has been installed on VMWare Fusion (Screen 1 and 2), its IP address detected using ipconfig (Screen 3; for testing connection **to / from** the Server) and the connection to the server has been tested using ping command (Screen 4).



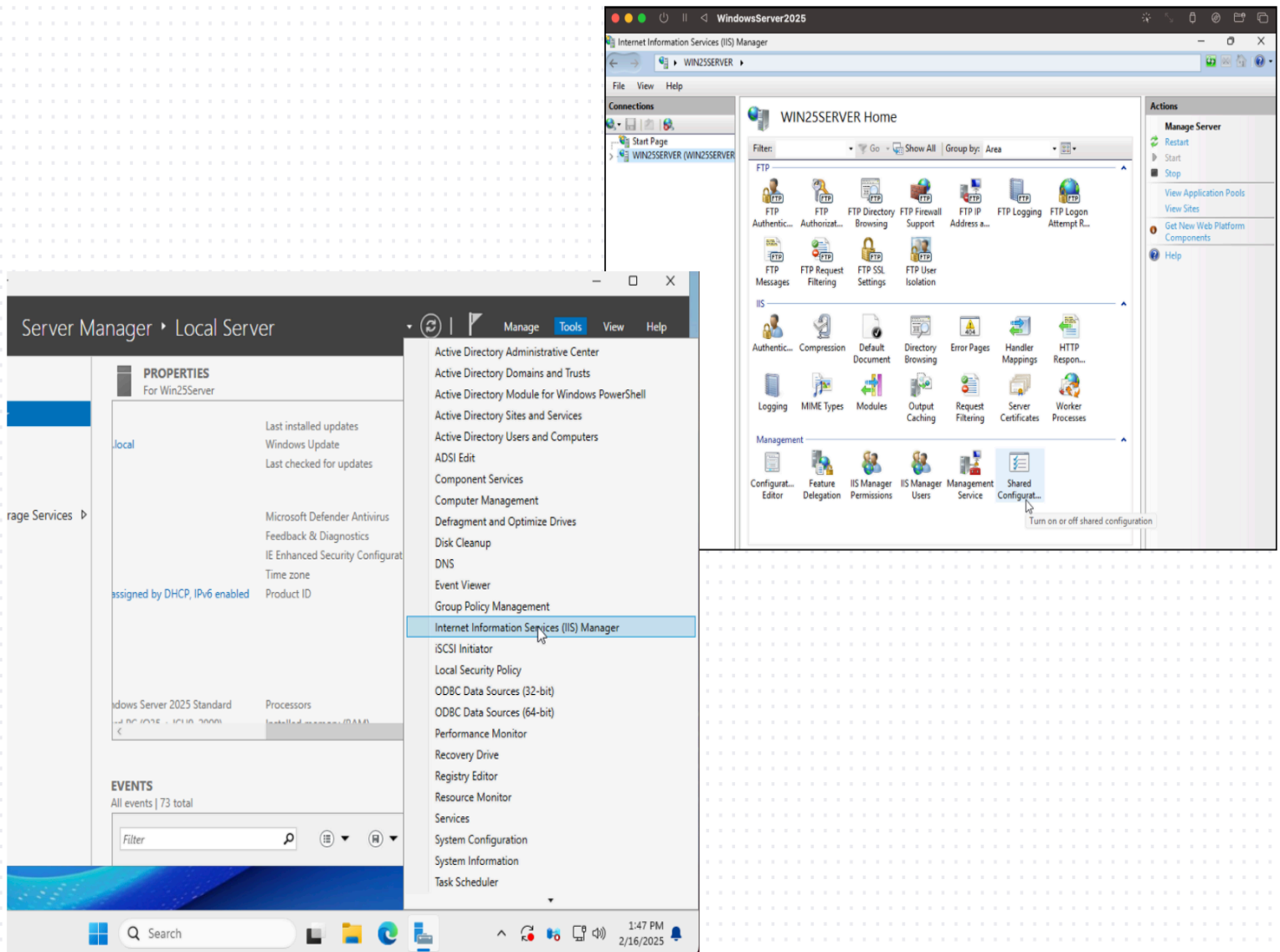
TESTING THE UBUNTU CLIENT

Additionally, a Ubuntu client has been setup to test both the FTP and IIS services from the Windows 2025 Server. This client has been installed on UTM (Screen 1), its IP address detected using ifconfig (Screen 2; for testing connection **to / from** the Server) and the connection to the server has been tested using ping command (Screen 3).

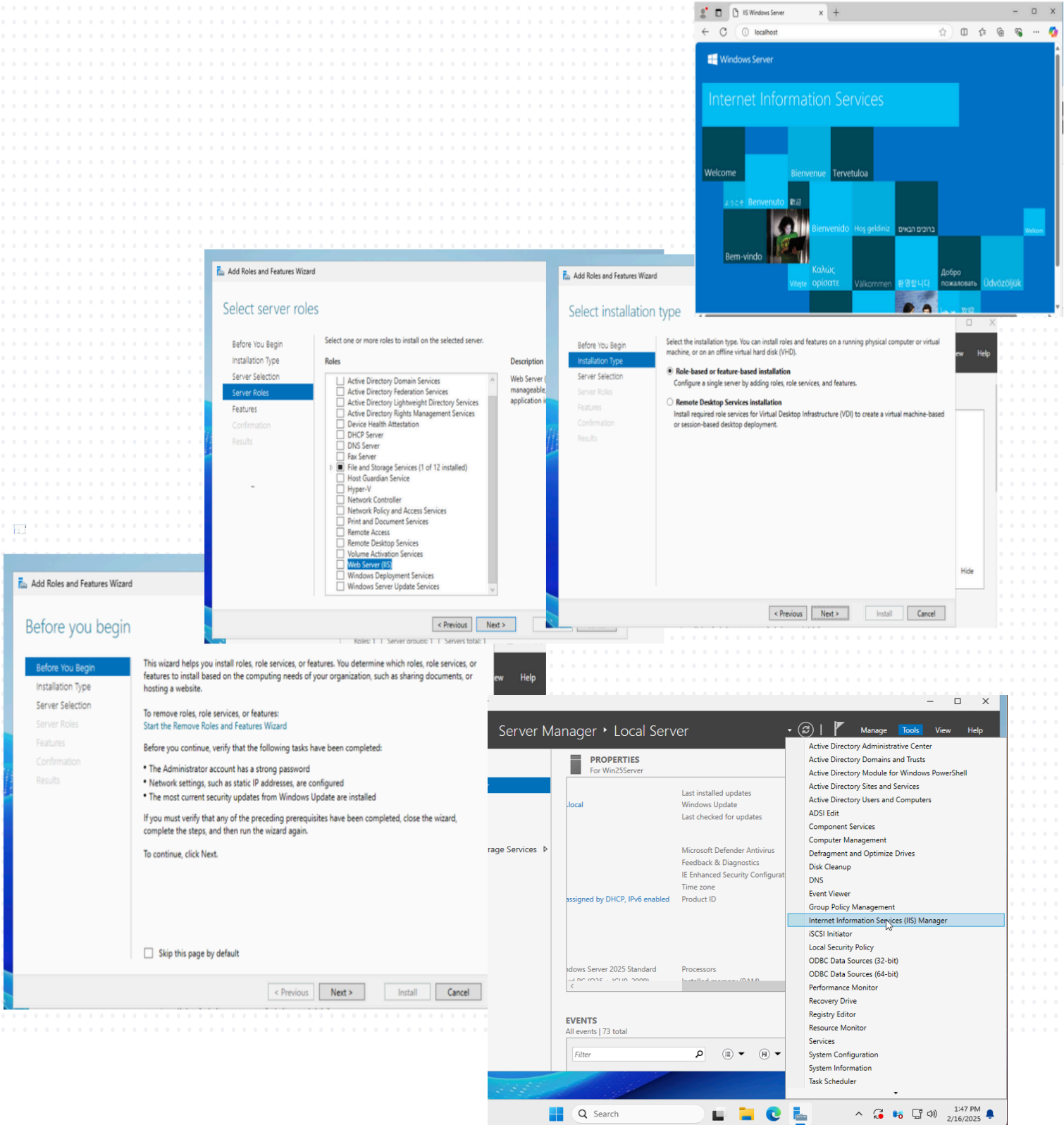


ADDING ROLES : IIS AND FTP

In this section, the roles IIS and FTP are added to the server. Find below some of the screen shots :

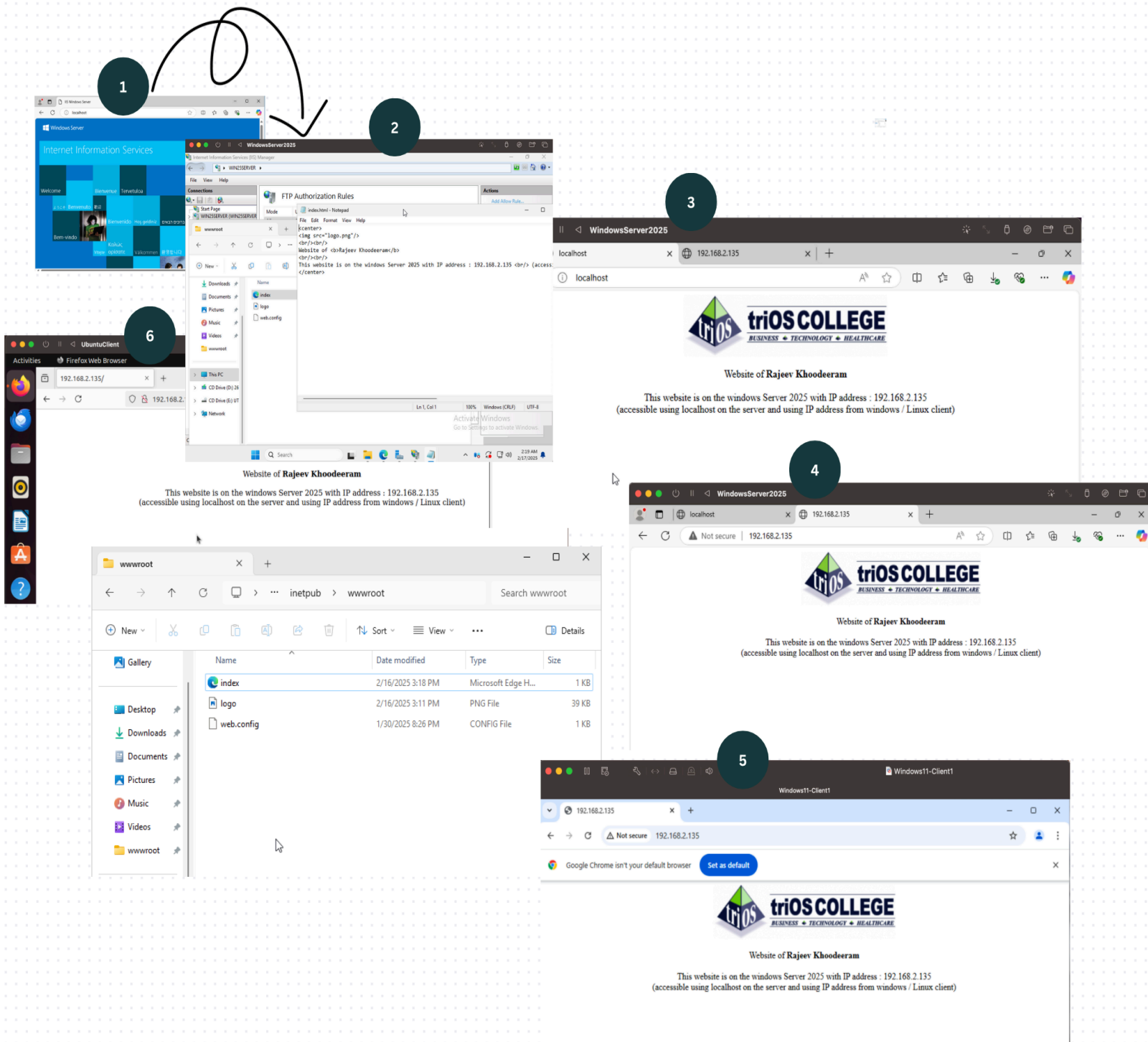


CONFIGURING IIS ON THE SERVER



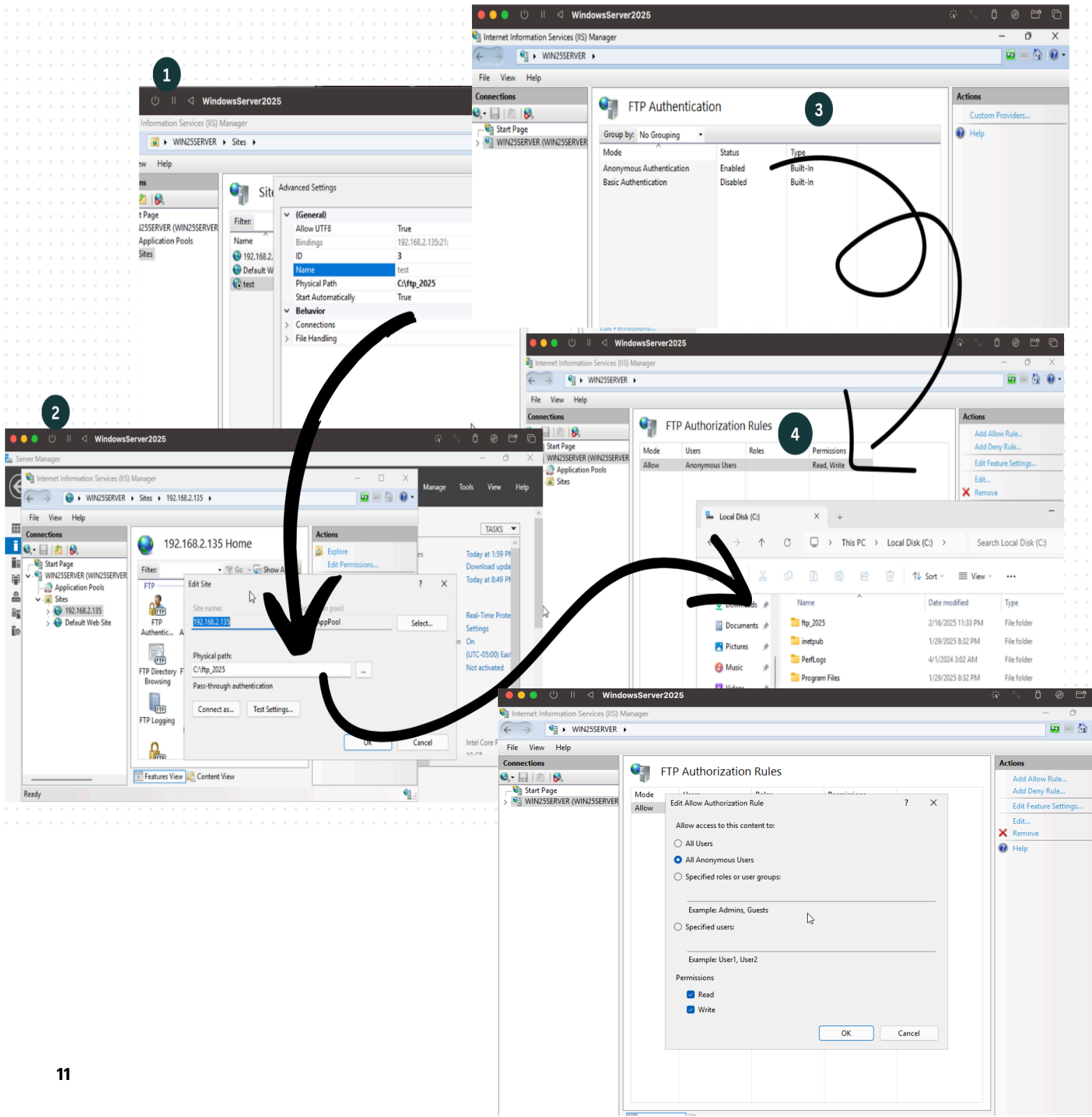
TESTING IIS ON (1) WINDOWS SERVER (2) WINDOWS 11 CLIENT (3) UBUNTU CLIENT

The IIS web server has been tested on the Windows Server (Screen 3 - using localhost and Screen 4 - using server IP address 192.168.2.135), Windows Client (Screen 5- using server IP address 192.168.2.135) and Ubuntu Client (Screen 6- using server IP address 192.168.2.135). **Kindly note that the original file has been modified from Screen 1 to look like in Screen 2.**



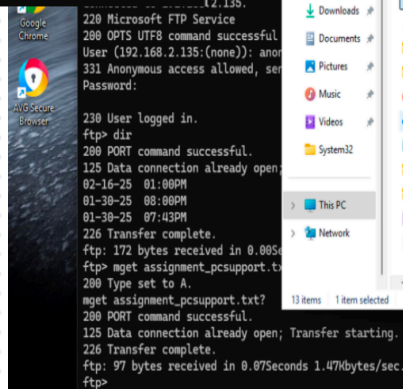
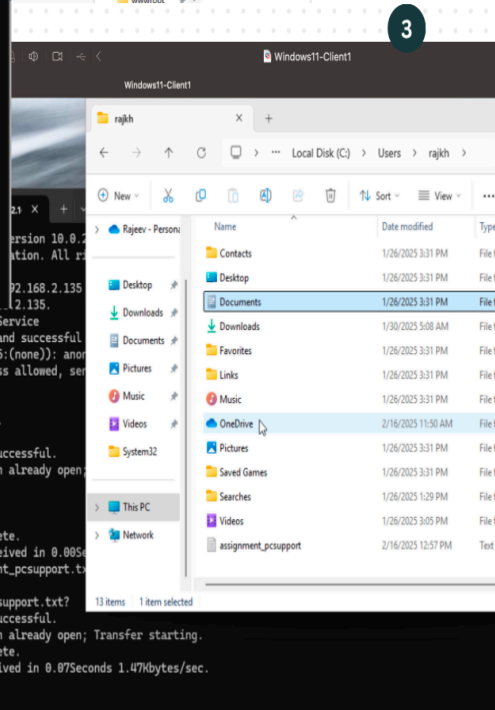
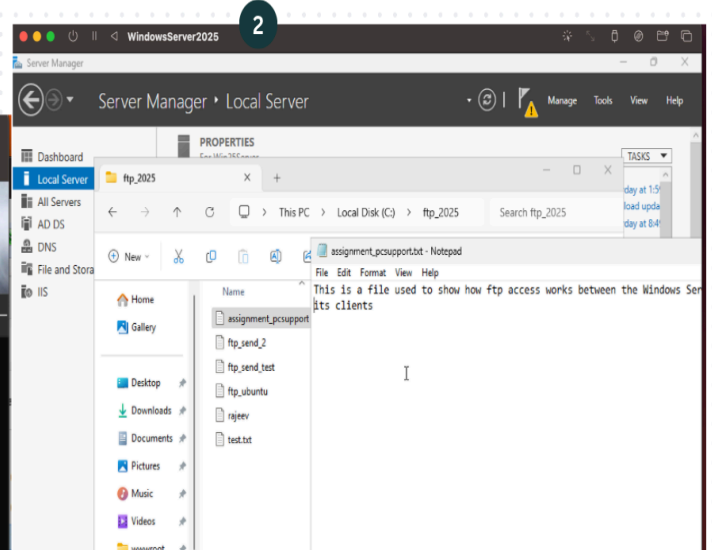
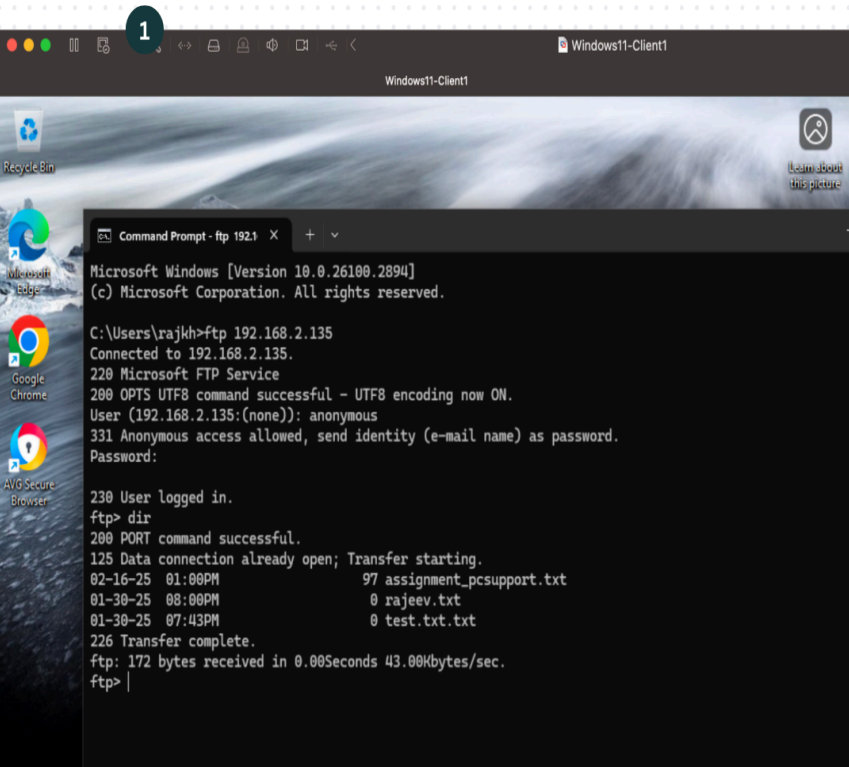
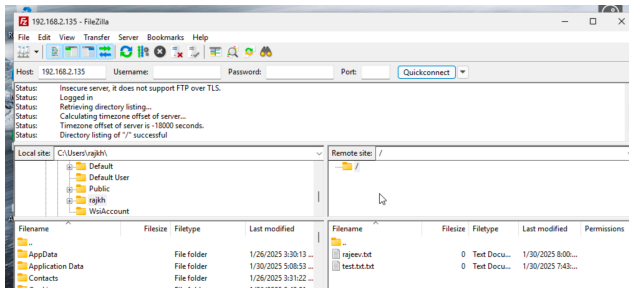
FTP INSTALLATION AND CONFIGURATION

The FTP server has been configured with the default folder being C:\ftp_2025 (Screen 1 and 2), anonymous account has been activated (Screen 3) and finally to be able to transfer file to the server, the FTP authorization rules have been set to READ/WRITE (otherwise by default it is READ only; Screen 4).



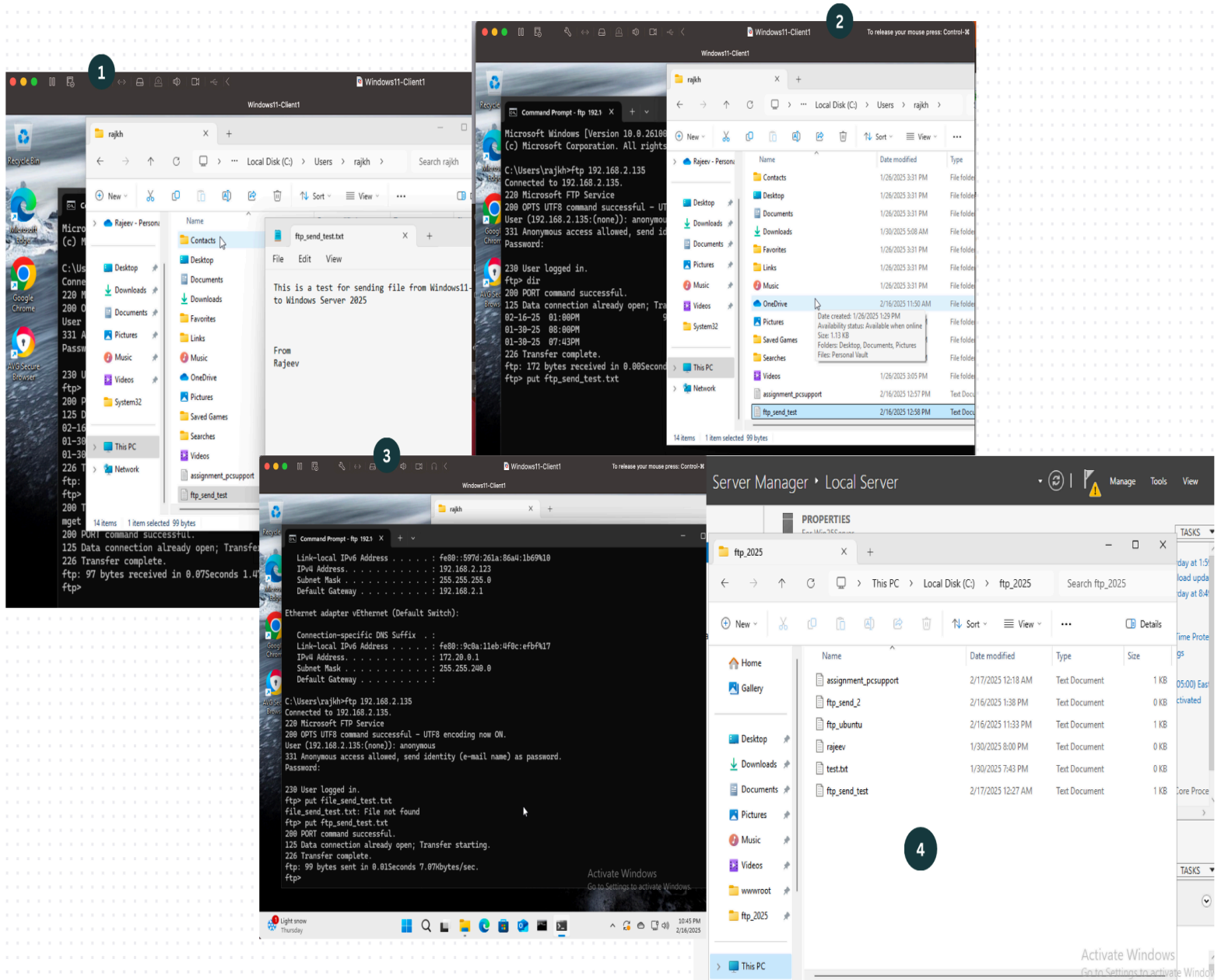
FTP TESTING ON WINDOWS CLIENT (LISTING/GETTING FILES)

Using FileZilla, the contents of the FTP directory **ftp_2025** is listed (only 2 files). Then a new file assignment_pcsupport.txt is created on the server (Screen 2) and pulled to the Windows client using ftp command "mget" (screen 3) and listed again in Screen 1.



FTP TESTING ON WINDOWS CLIENT (SENDING FILES)

A new text file "ftp_send_test.txt" is created on the Windows 11 client (Screen 1 and 2) and send to the Windows Server 2025 using the FTP command "put" (Screen 3; Transfer completed) and verified on the server (Screen 4).



FTP TESTING ON UBUNTU CLIENT

A final testing is done on the Ubuntu client where connection to the Windows Server 2025 is verified (Screen 1) and directory listing established in Screen 2. A new file is created on the client (ftp_ubuntu.txt; Screen 3) and transferred to the server using the command “put” (Screen 3). Finally, the file can be accessed on the Windows Server 2025 (Screen 4).

